



# Results & Analysis:

*R&I Performance Audit Jan-June 2016*

Prof Dr Ahmad Fauzi Ismail  
Deputy Vice Chancellor (Research & Innovation)

# Overall Performance: Faculty & CoE:

Jan-June 2016

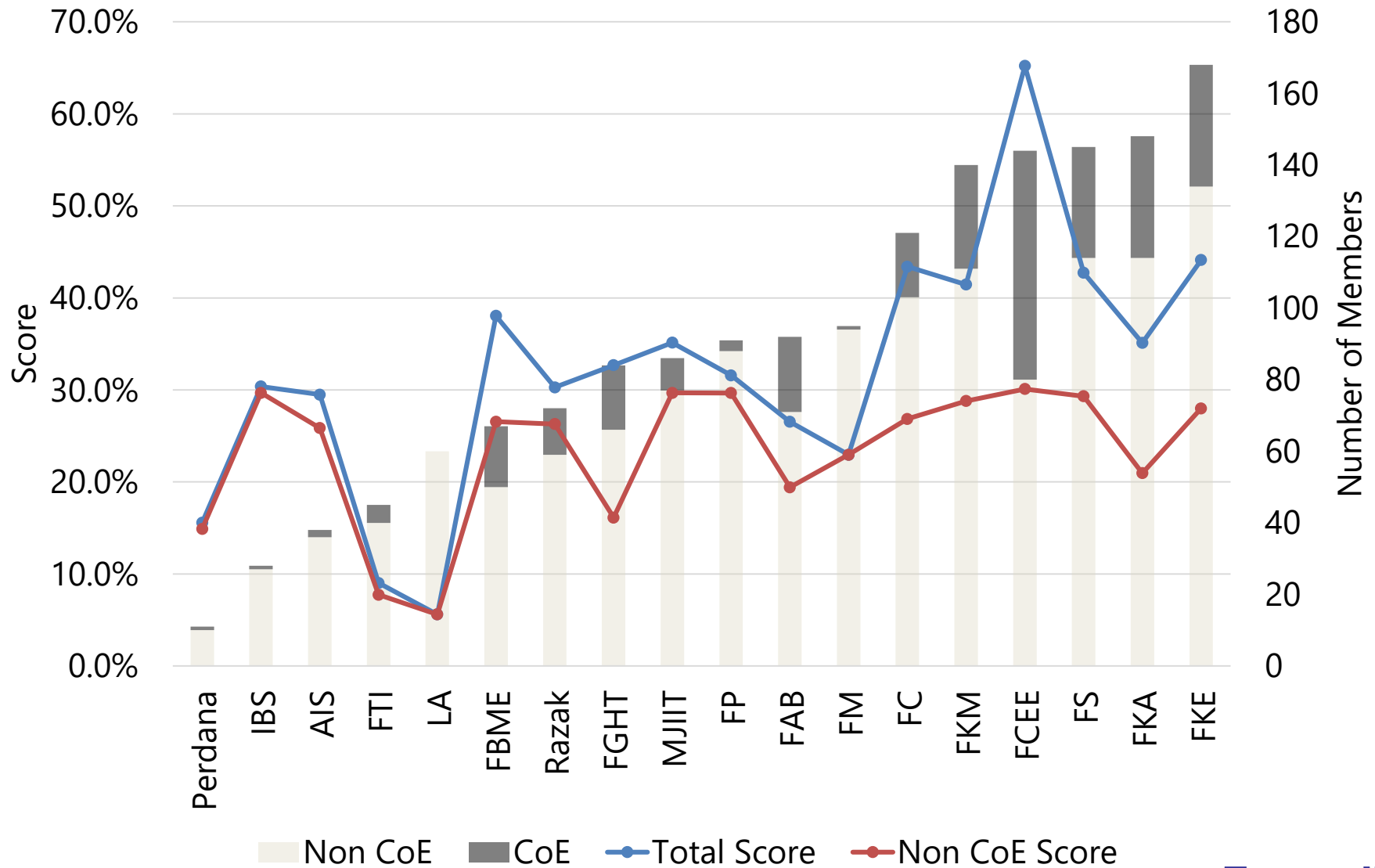


Faculty	Score
FCEE	65%
FKE	44%
FC	43%
FS	43%
FKM	41%
FBME	38%
MJIIT	35%
FKA	35%
FGHT	33%
FP	32%
IBS	30%
Razak	30%
AIS	29%
FAB	27%
FM	23%
Perdana	16%
FTI	9%
LA	6%

CoE	Score	Thrust	Additional Requirement	Verdict
ISI-SIR	54%	Research	Yes	Passed
AMTEC	53%	Research	Yes	Passed
IBD	52%	Service	Yes	Passed
RISE	49%	Research	Yes	Passed
IHCE	41%	Research	Yes	Passed
IVAT	40%	Service	Yes	Passed
ISIIC	37%	Service	Yes	Failed
WCC	35%	Research	No	Failed
CAIRO	34%	Research	Yes	Failed
UTM-MPRC	32%	Service	Yes	Failed
IFE	31%	Research	No	Failed
IVeSE	27%	Research	No	Failed
IKG	22%	Service	No	Failed
CEE	14%	Research	No	Failed

# Faculty MyRA II Performance:

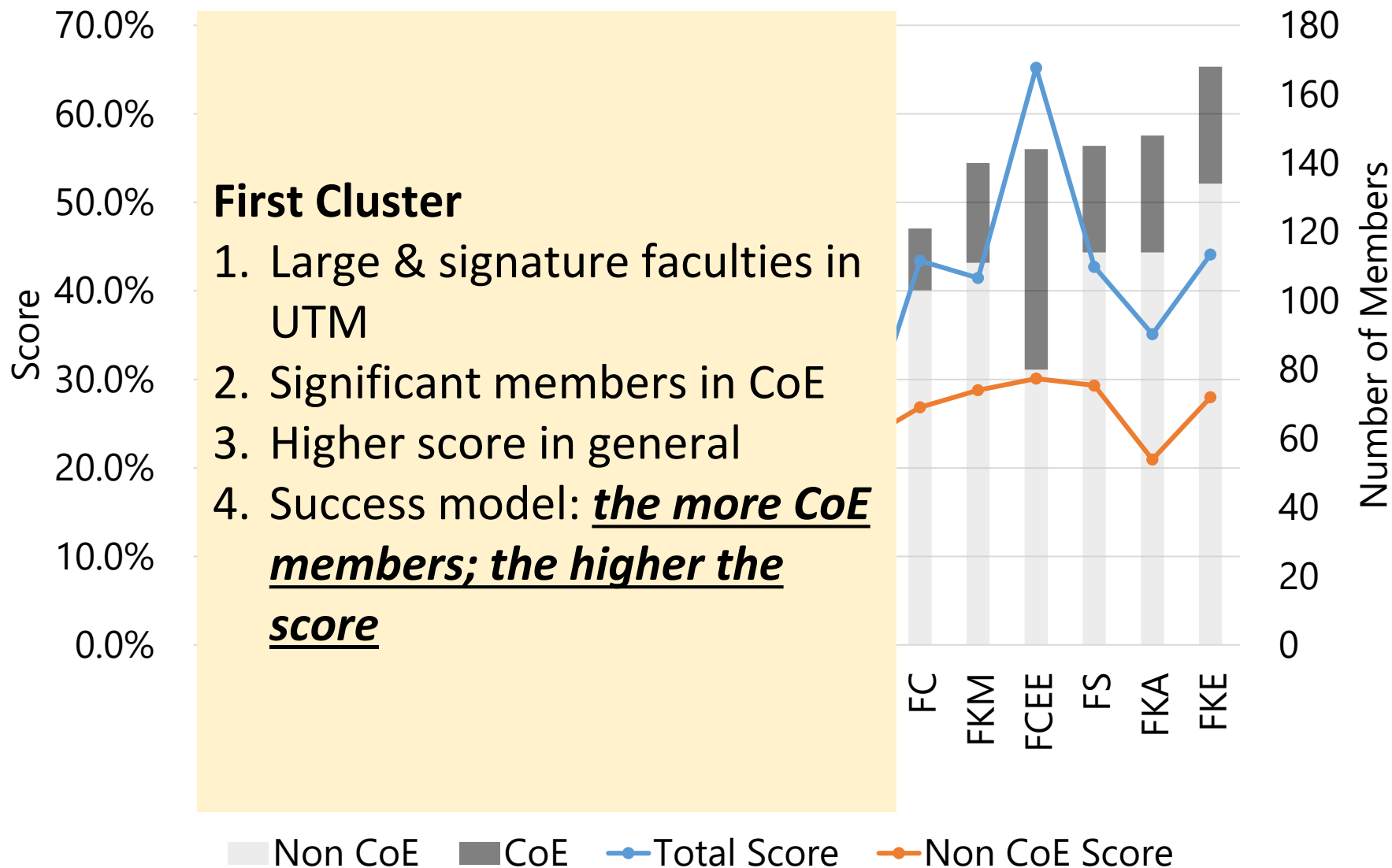
Jan-June 2016



inovatif • entrepreneurial • global

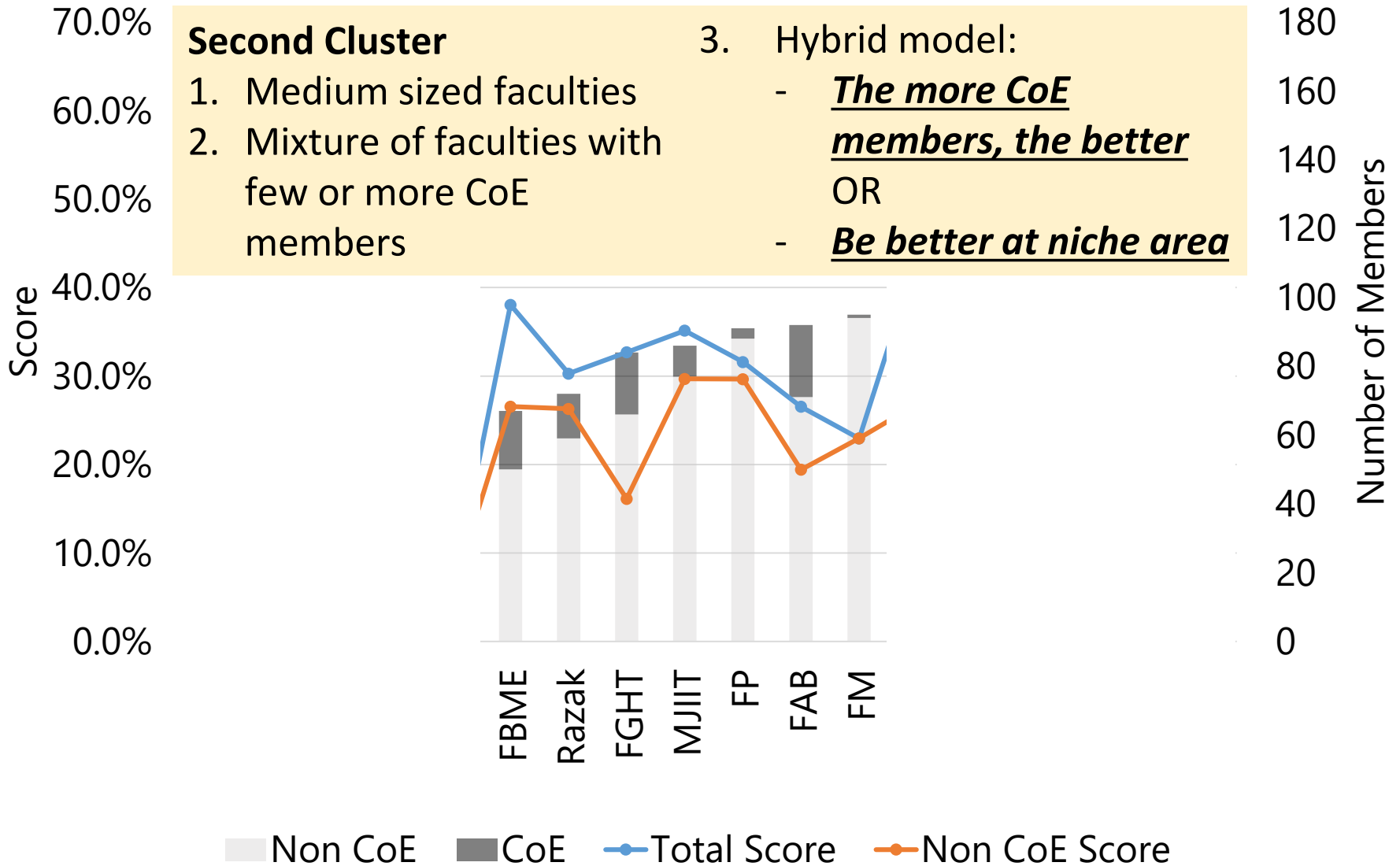
# Faculty MyRA II Performance:

Jan-June 2016



# Faculty MyRA II Performance:

Jan-June 2016



**Second Cluster**

1. Medium sized faculties
2. Mixture of faculties with few or more CoE members

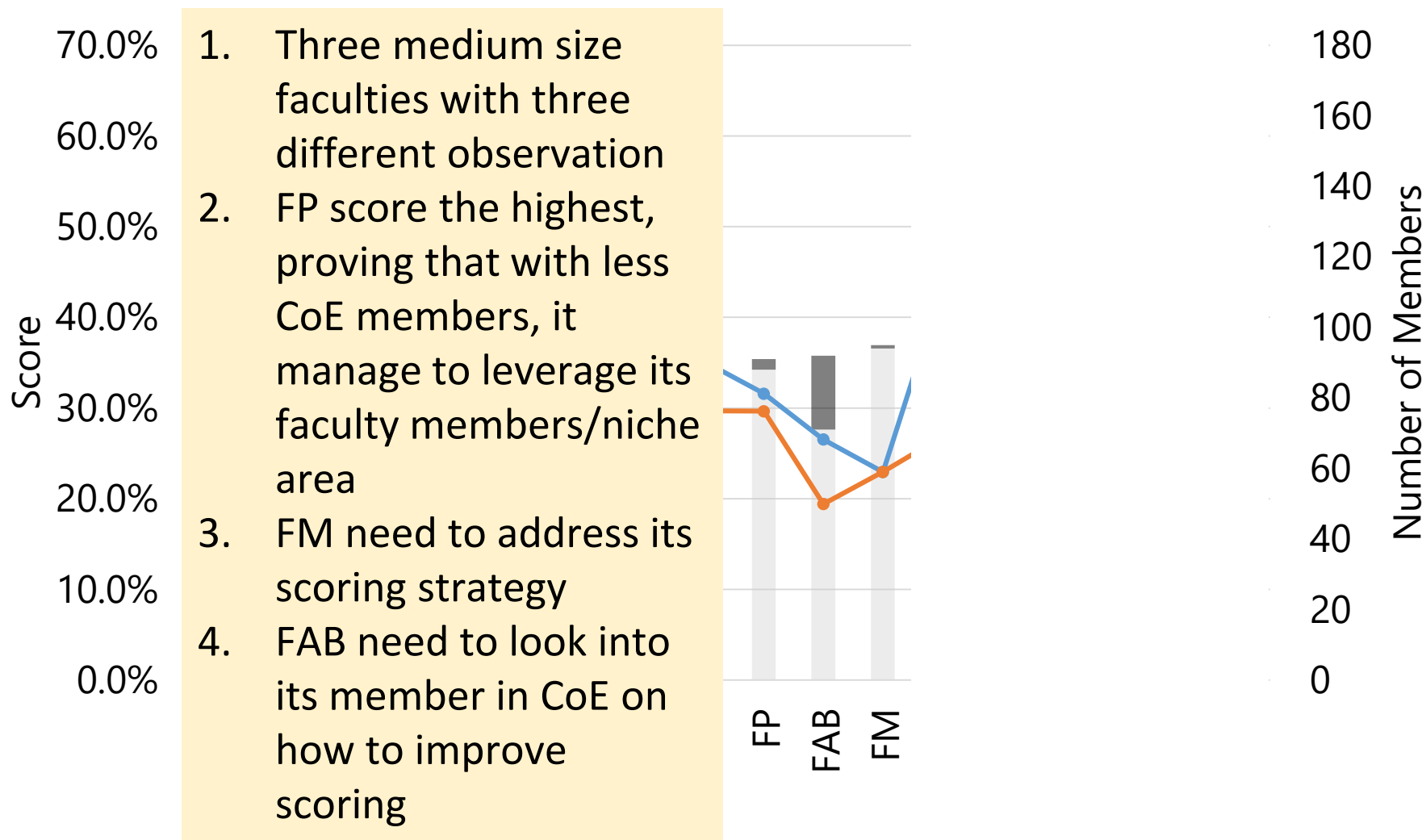
3. Hybrid model:

- **The more CoE members, the better**
- OR
- **Be better at niche area**

Non CoE
  CoE
  Total Score
  Non CoE Score

# Faculty MyRA II Performance:

Jan-June 2016

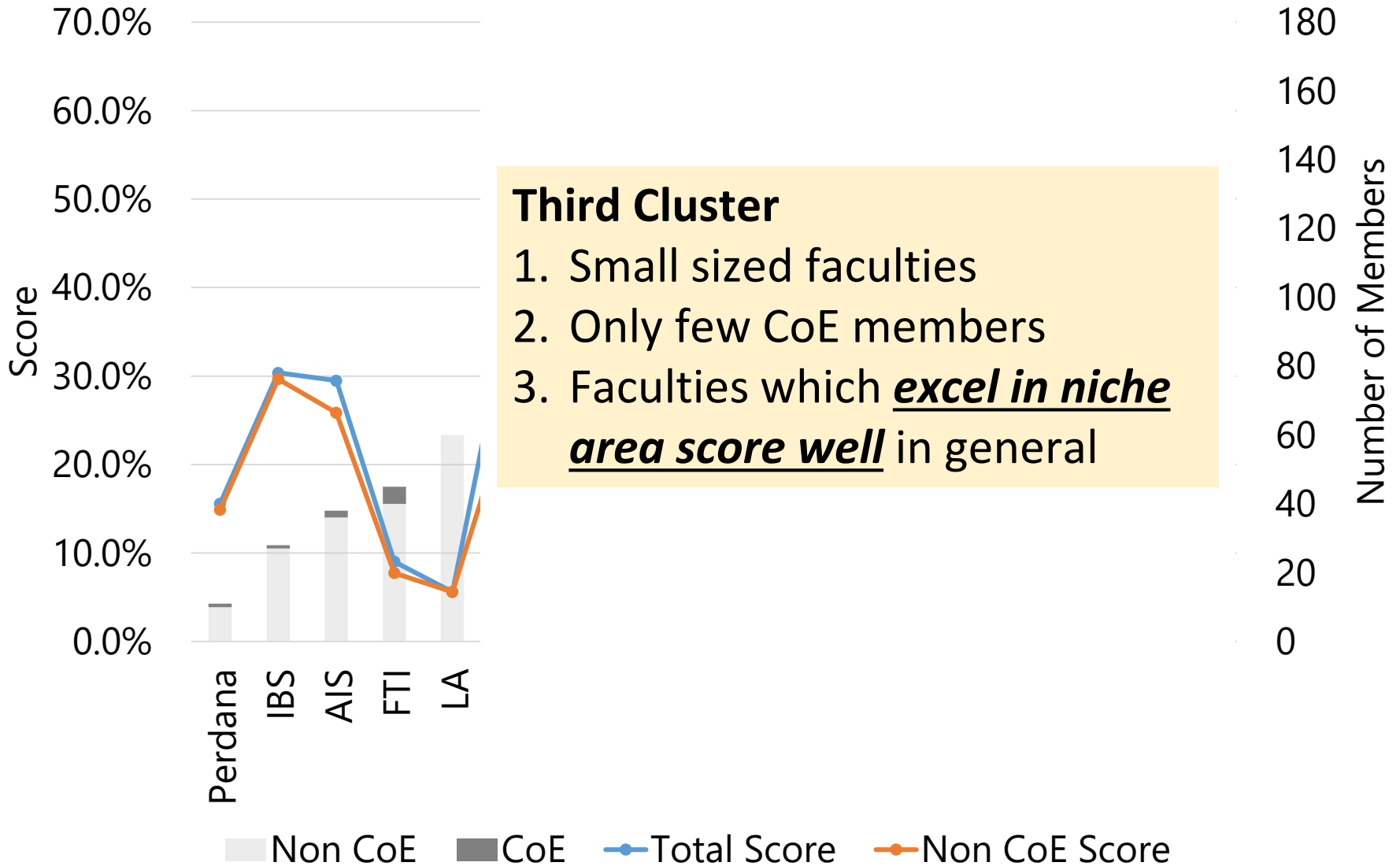


1. Three medium size faculties with three different observation
2. FP score the highest, proving that with less CoE members, it manage to leverage its faculty members/niche area
3. FM need to address its scoring strategy
4. FAB need to look into its member in CoE on how to improve scoring

Non CoE
  CoE
  Total Score
  Non CoE Score

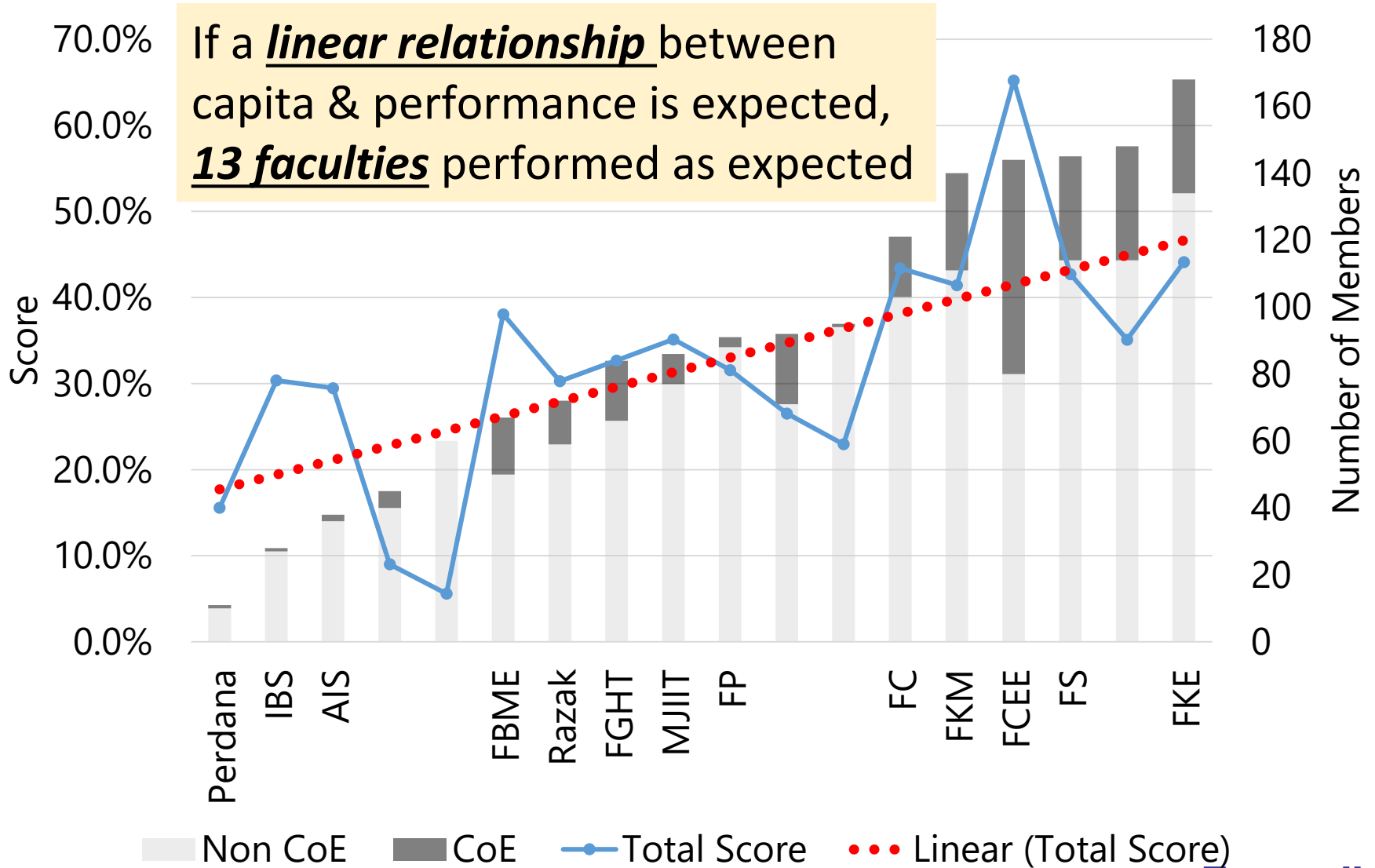
# Faculty MyRA II Performance:

Jan-June 2016



# Faculty MyRA II Performance:

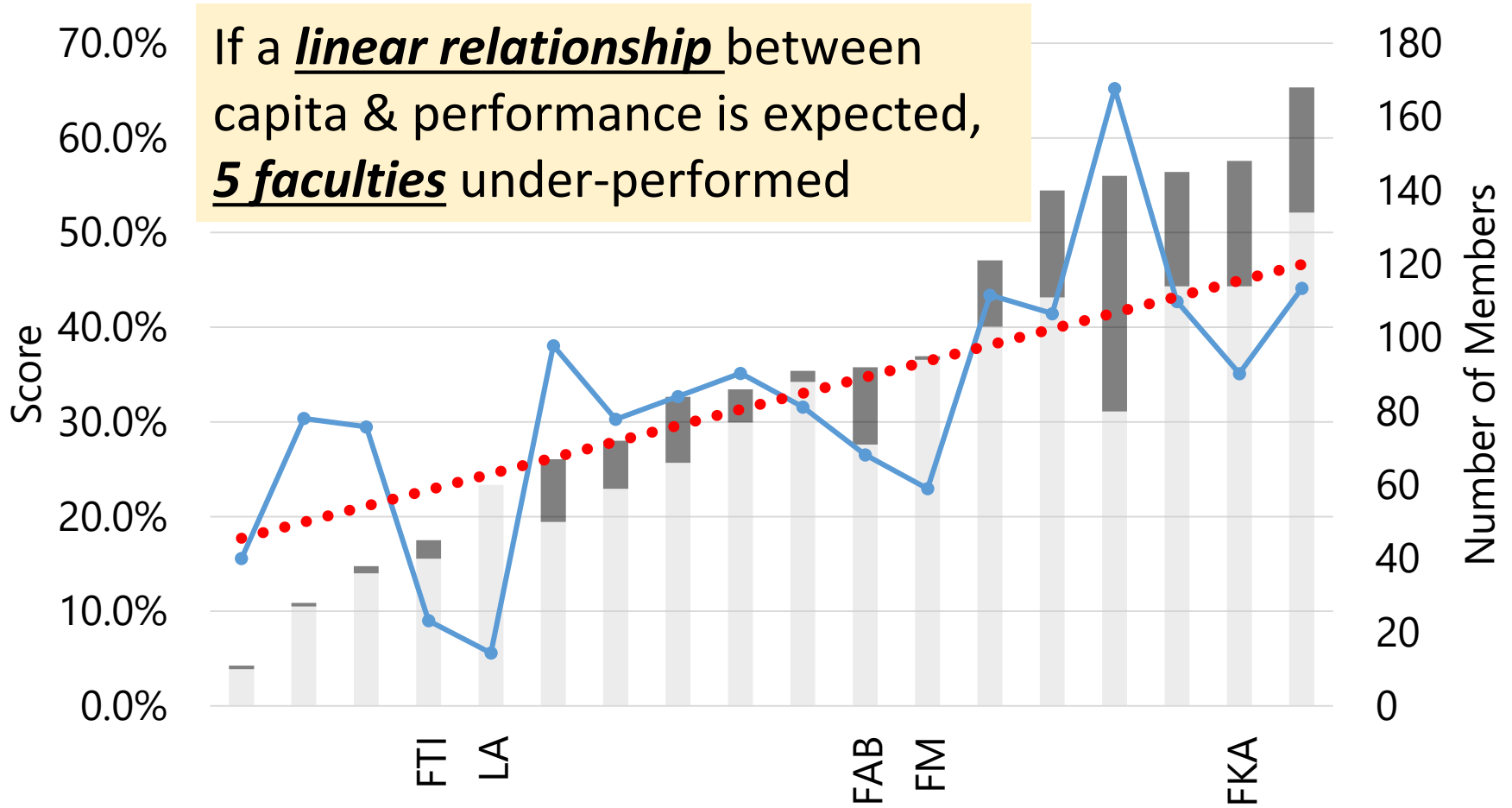
Jan-June 2016





# Faculty MyRA II Performance:

Jan-June 2016

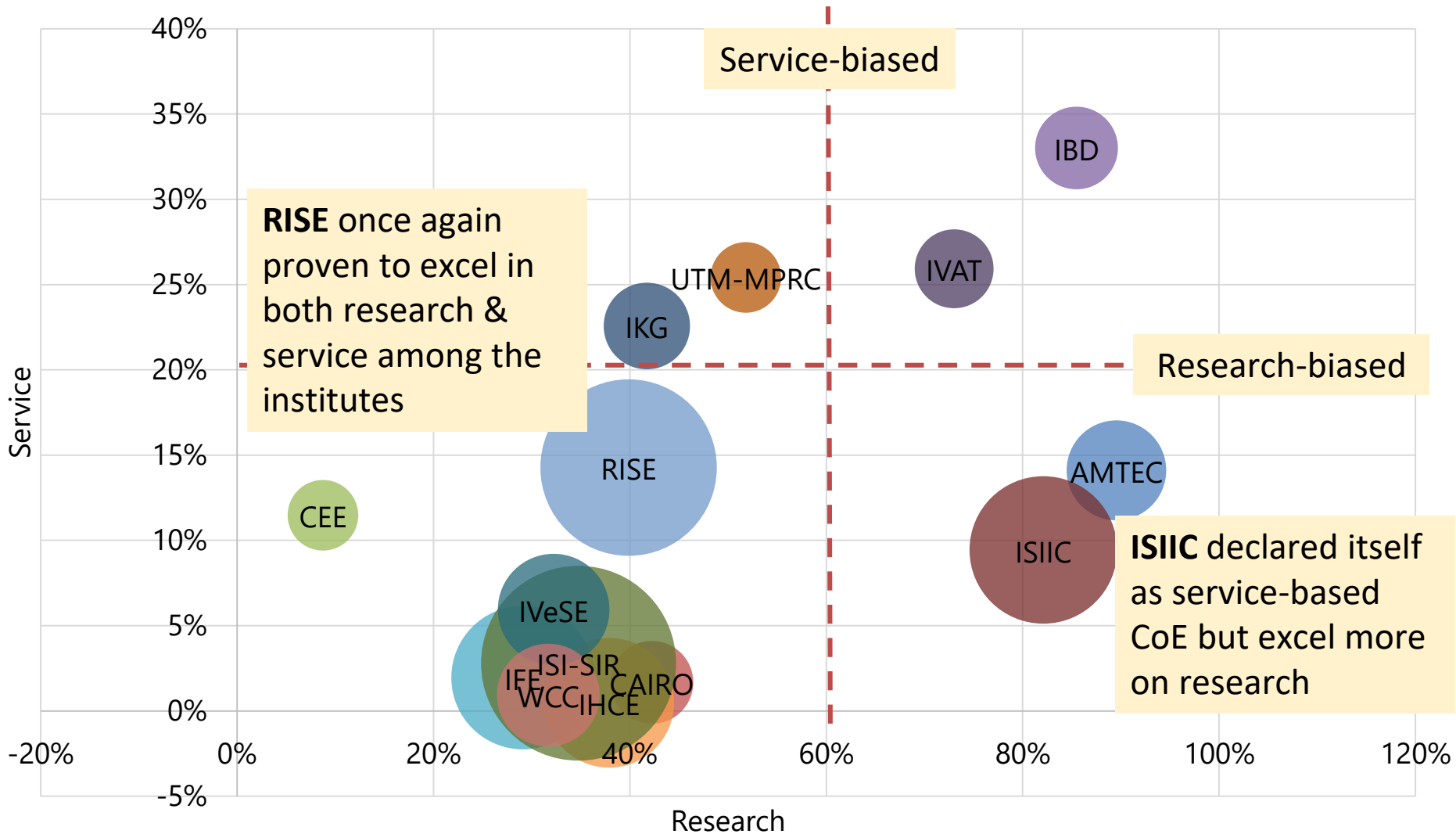


Non CoE
  CoE
  Total Score
  Linear (Total Score)

inovatif • entrepreneurial • global

# Faculty HCoE Performance:

Jan-June 2016



# Faculty HCoE Performance:

Jan-June 2016

